

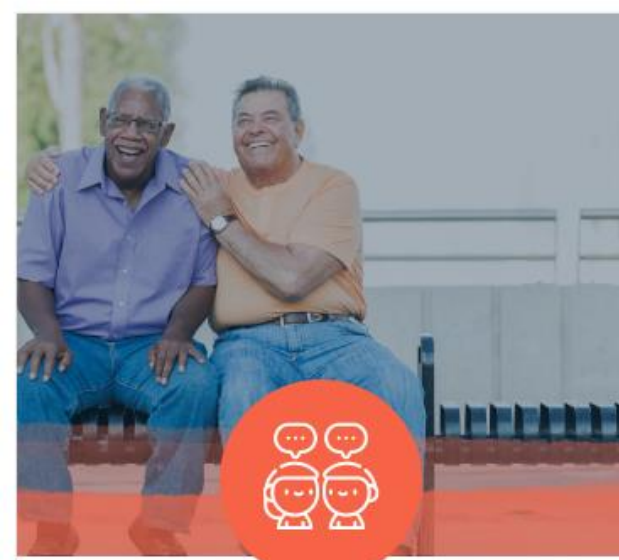
# Philadelphia Corporation for Aging

---

Fiscal Year 2025 - 2026  
Public Hearing

June 11, 2025





**Community &  
Connection**



**Help in the Home**



**Protection & Advocacy**



**Caregiver Support**

## Philadelphia Corporation for Aging

- Area Agency on Aging for Philadelphia County
- Established in 1973
- Private, nonprofit organization
- Mission: *To improve the quality of life for older Philadelphians and people with disabilities and to assist them in achieving their maximum level of health, independence, and productivity*



# Report on Older Philadelphians (60+)

Data taken from 2023 American Community Survey  
5-year Estimates Subject Tables, Census Bureau



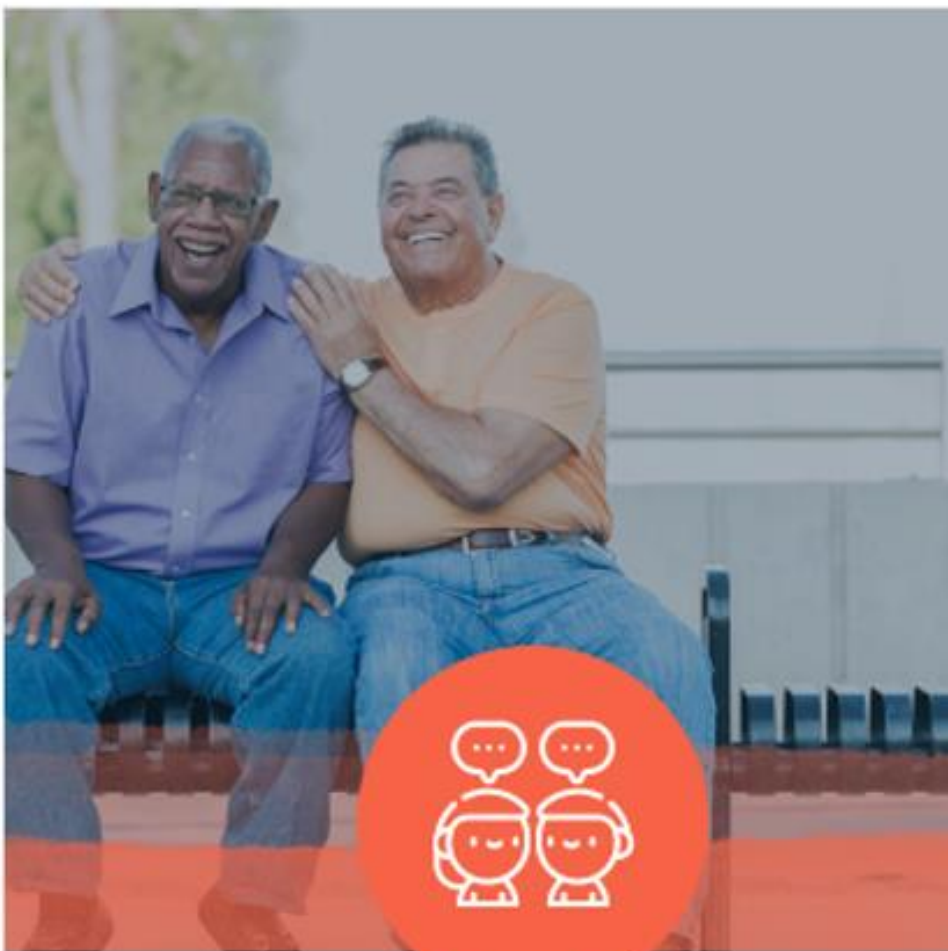
**319,967** adults over 60 in  
Philadelphia;  
**20.2%** of county population  
**9.4%** of state's 60+  
population



**21.5%** of Philadelphia's  
60+ population below  
federal poverty level;  
**20.9%** of state's 60+  
population below federal  
poverty level



**58.2%** of Philadelphia's  
60+ population are a  
member of a minority  
group;  
**37.8%** of state's 60+  
minority population



# Community and Connection

- PCA Helpline
- Senior Community Centers
- Congregate Meals
- Employment Services
- Senior Farmers Market Nutrition Program
- Health and Wellness Programs
- Transportation

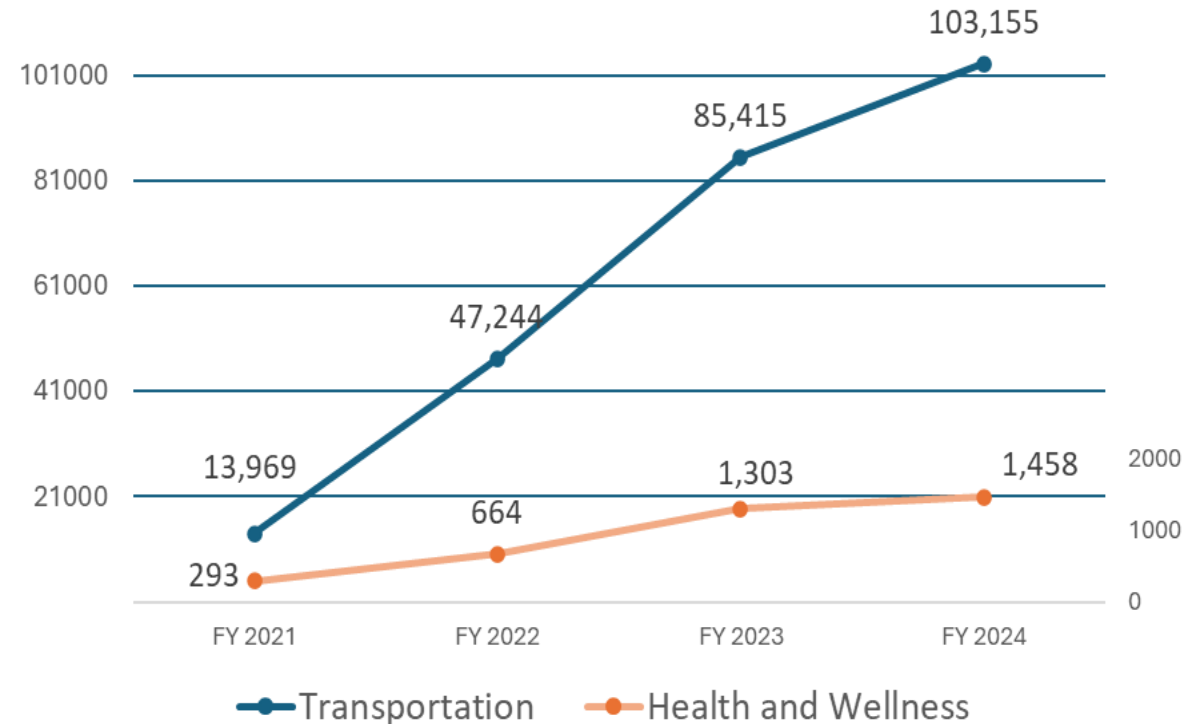
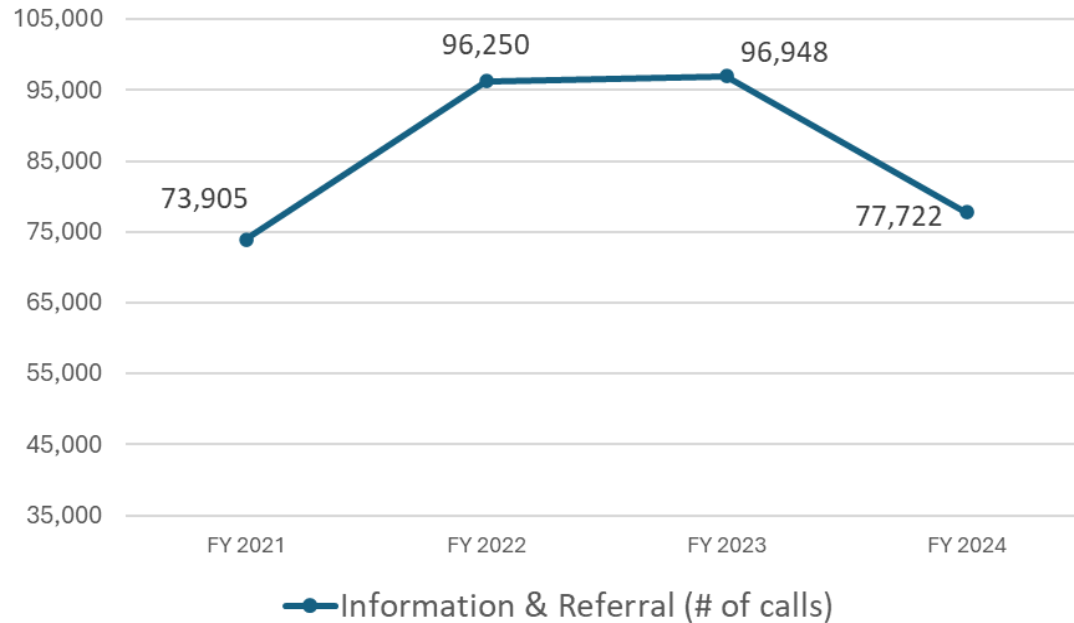
Additional services:

- Community Outreach
- Senior Companion Program
- Diverse Advisory Councils

## Community & Connection

# PCA Programs and Services Provided: FY21 - FY24

## Community and Connection





# Help in the Home

- Eligibility Assessment
- Care Management (OPTIONS)
- Domiciliary Care Program
- Caregiver Support Program
- Caregiver Respite: Adult Day Services
- Home-Delivered Meals
- Home Repairs and Modifications

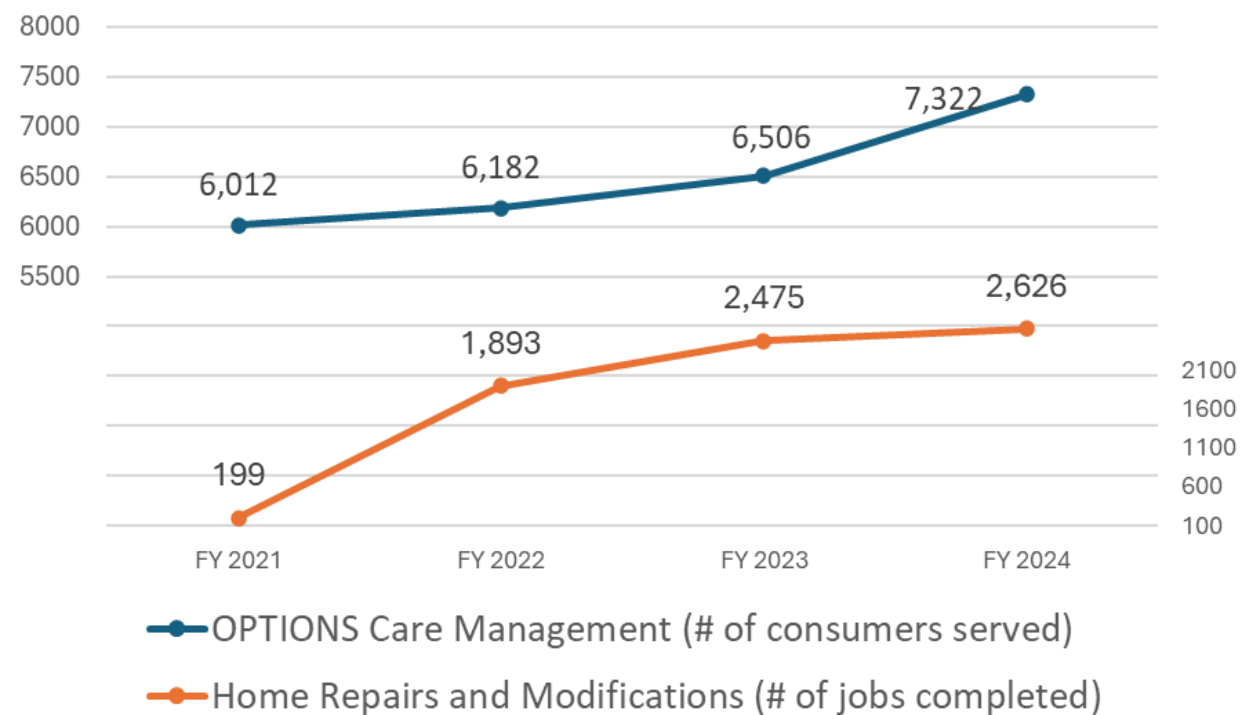
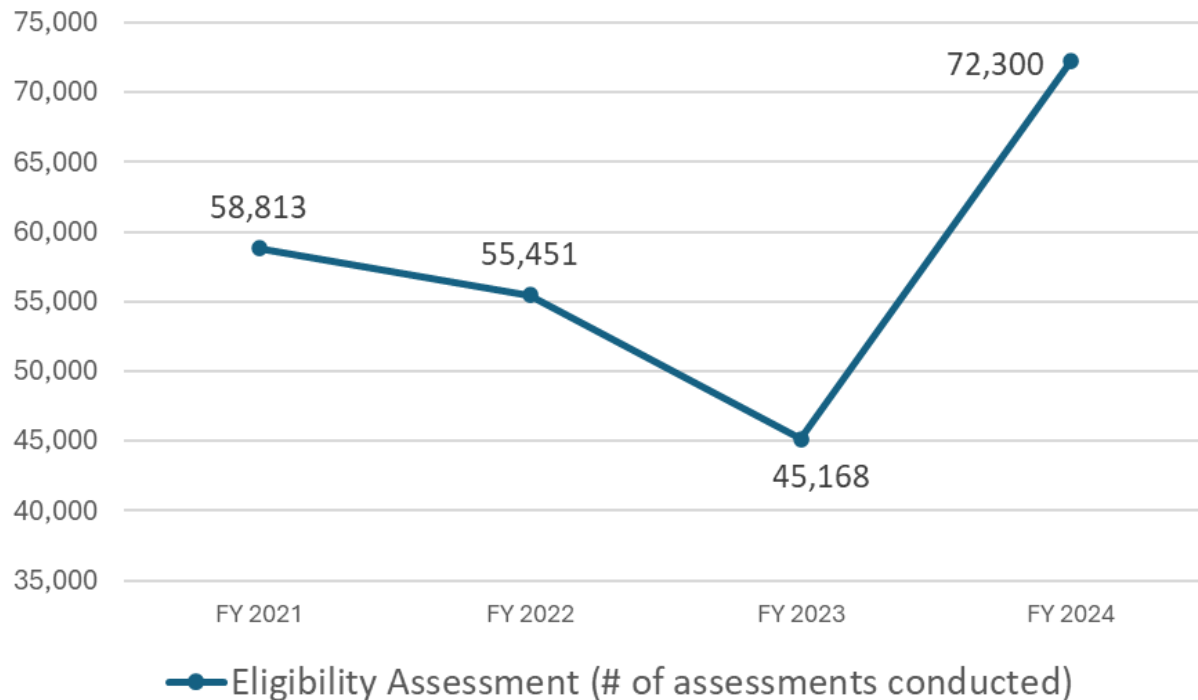
## Additional Services

- Emergency Fund Coalition
- Veterans Program

**Help in the Home**

# PCA Programs and Services Provided: FY21 - FY24

## Help in the Home





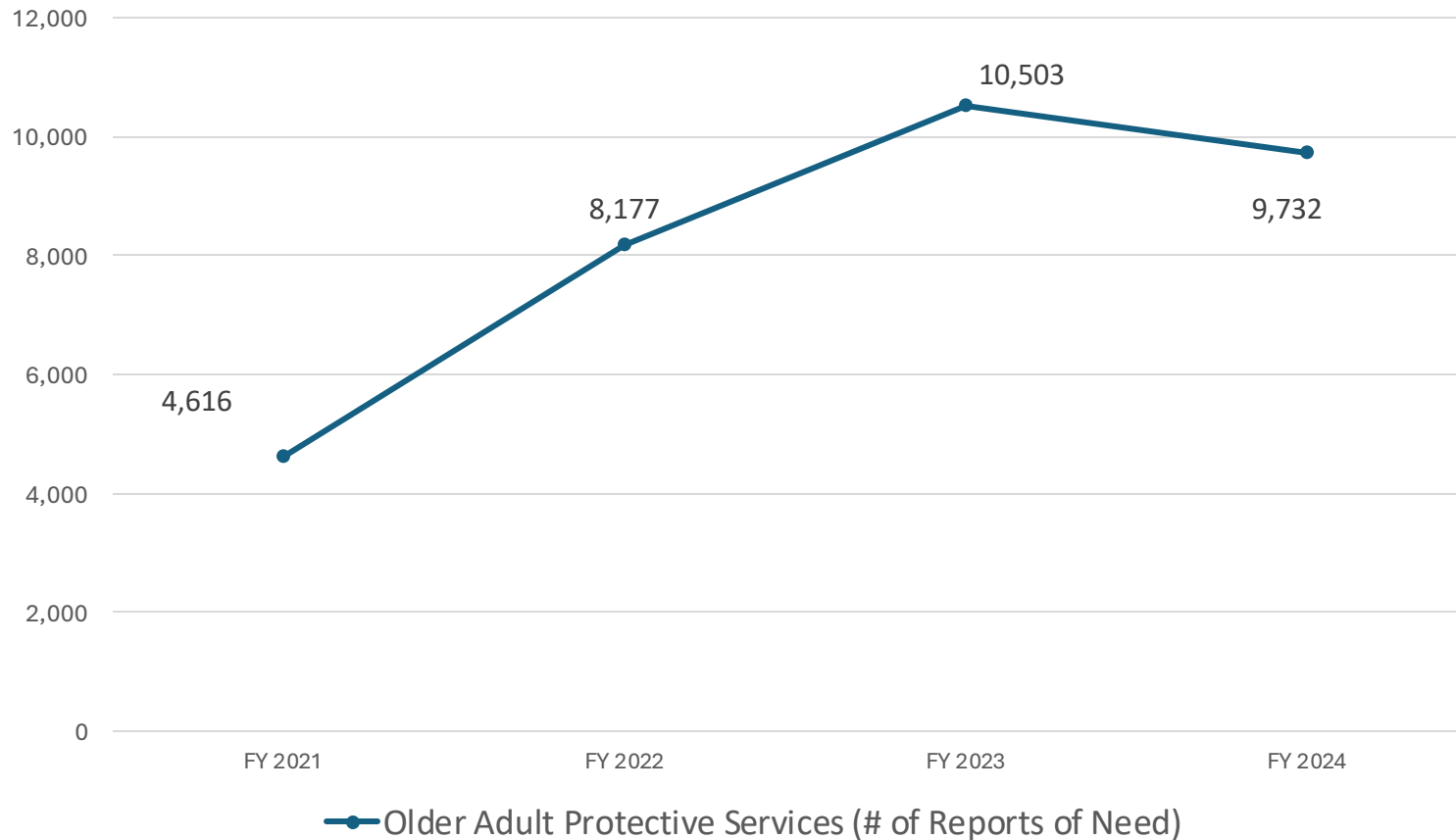
# Protection and Advocacy

- Older Adult Protective Services
- Ombudsman Program
- Insurance and Benefits Counseling
- Legal Services
- Older Adult Advocacy

## Protection & Advocacy

# PCA Programs and Services Provided: FY21 - FY24

## Protection and Advocacy



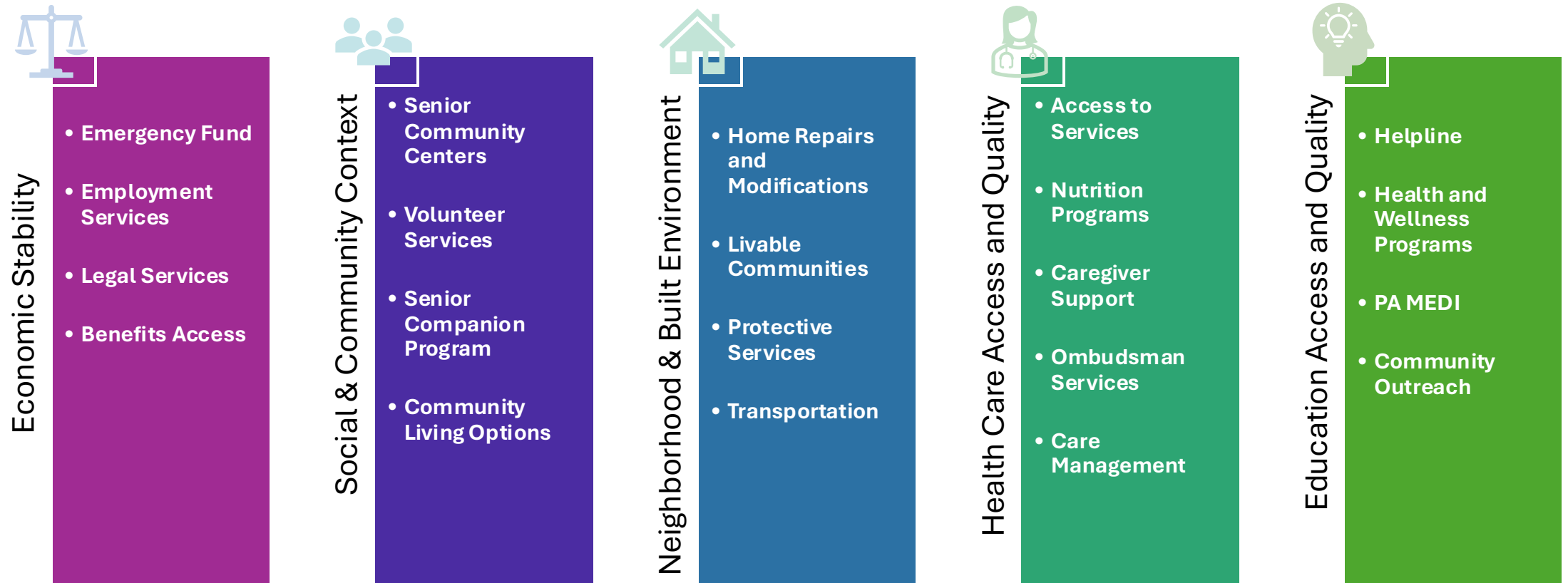


## Caregiver Support

# Caregiver Support

- Support for caregivers of older adults, adults with disabilities
- Support for older relatives caring for children
- Benefits and insurance counseling
- Support groups
- Caregiver supplies reimbursement
- Training and workshops
- Home adaptations
- Respite care

# PCA's Impact on Social Determinants of Health



# Federal Update

- Reauthorization of the Older Americans Act (OAA)
- Restructuring of the Department of Health and Human Services (HHS)
- Draft of the President's 2026 proposed budget for the Department of Health and Human Services (HHS)
  - Included cuts to several OAA programs; however, recent updates indicate a walking back on these cuts
- Proposed cuts to Medicaid and the Supplemental Nutrition Assistance Program (SNAP), formerly known as the Food Stamp Program

# State Update

- Governor's proposed \$51.5 billion budget for FY 2026 includes:
  - 20 million dollars increase to the PENNCARE
  - 3 million dollars to modernize the PA Link
  - 2 million dollars to fund an initiative to improve oversight and accountability of the Area Agencies on Aging (AAAs)
- Aging Our Way, PA
- Comprehensive Aging Performance Evaluation (CAPE)
  - State's new monitoring system for the Area Agency on Aging (AAA) network
  - Older Adult Protective Services, OPTIONS Program, and Caregiver Support Program

# PCA's Responses and Initiatives

- Collaboration with P4A and USAging to advocate for older adults and their caregivers at the state and federal levels
- Engaging with elected officials
- Op-ed prepared
- The Annual Legislative Breakfast and Roundtable Discussion

# 2024-2028 Area Plan

## 2024-2028 Area Plan Five Goals:

- Strengthen the Older Americans Act core programs
- Improve social engagement and trust in at-risk communities
- Address equity issues impacting consumer's social determinants of health (SDoH) and access to resources
- Expand access to home and community-based services (HCBS)
- Strengthen caregiver services

# PCA Plans for FY 2026

- Reimagining Aging Services: The Next 50 Years of PCA
  - Surveys
  - Listening Session
- New Helpline service platform to allow consumers to communicate across multiple channels
- New software for improved Senior Center experience
- New partnership with SEPTA for rides
- HUD-funded pilot home modification program
- New partnership with State case management team for complex cases

## FISCAL YEAR 2026 FINANCIALS

### Projected Revenue

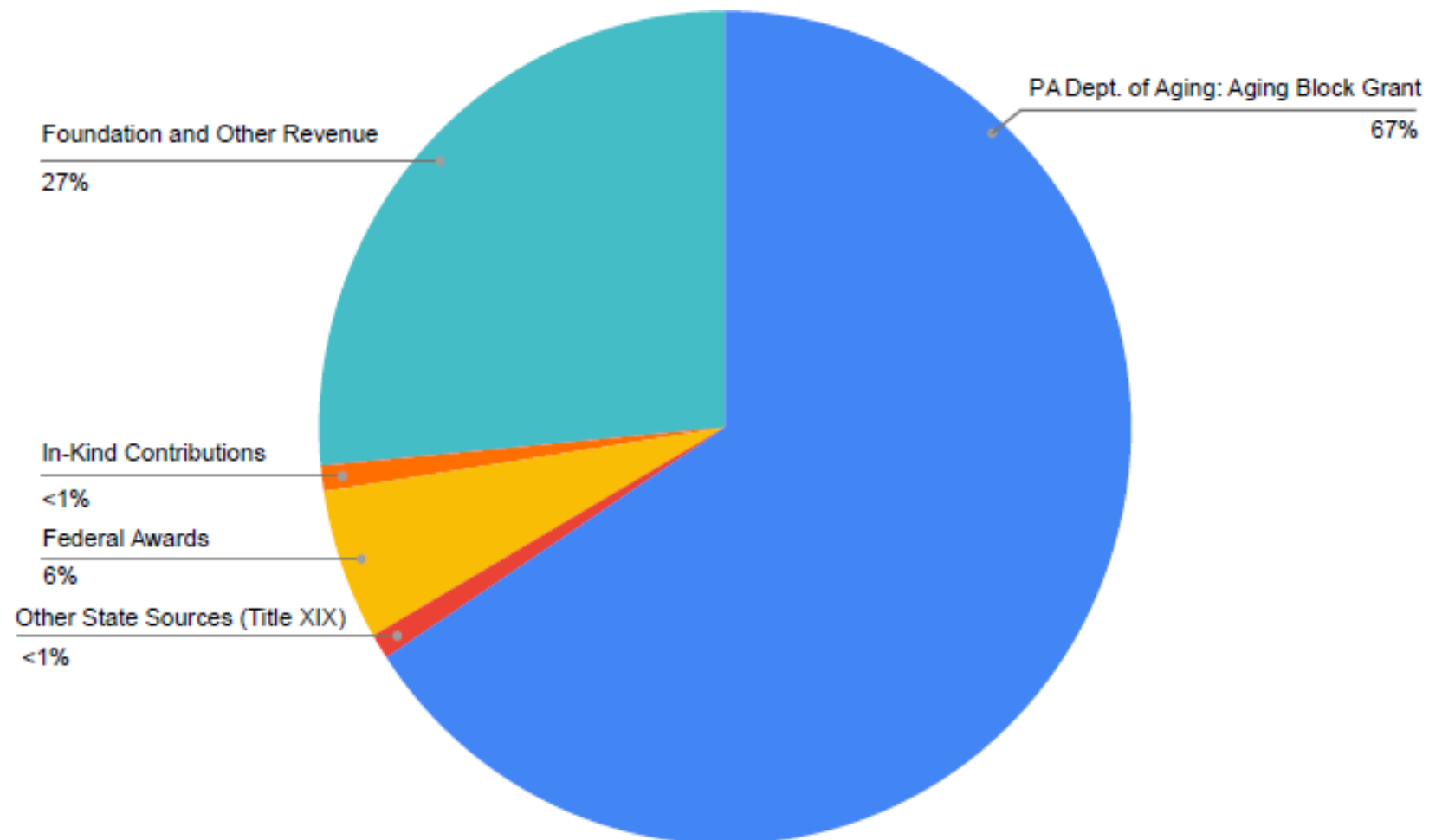
#### Public Support:

PA Dept. of Aging: Aging Block Grant	\$62,554,000	67%
Other State Sources (Title XIX)	782,000	<1%
Federal Awards	5,241,000	6%
City of Philadelphia	94,000	<1%
Subtotal	\$68,671,000	

#### Other Revenue:

In-Kind Contributions	\$96,000	<1%
Foundation and Other Revenue	25,253,000	27%
Subtotal	\$25,349,000	
Total Revenue	\$94,020,000	

# Fiscal Year 2026 Projected Revenue



# FISCAL YEAR 2026 FINANCIALS

## Projected Expenses

### Long-Term Care: 63%

Adult Day Care	\$159,000
Assessments	7,829,000
Care Management	9,390,000
Consumer Reimbursement	3,167,000
Domiciliary Care	792,000
Guardianship	577,000
Home Delivered Meals	10,171,000
Home Support	212,000
Medical Equipment & Supplies	255,000
Ombudsman Service	668,000
Personal Assistance	5,616,000
Personal Care	7,940,000
Professional Evaluation	92,000
Protective Services	12,711,000

Subtotal      **\$59,579,000**

### Community Services: 14%

Congregate Meals	\$5,834,000
Employment Services	1,169,000
Legal Assistance	409,000
Senior Companion	377,000
Senior Community Center Services	5,676,000
Volunteer Services	3,000

Subtotal      **\$13,468,000**

### Access Services: 8%

ADRC	\$209,000
Information and Assistance	4,536,000
Passenger Transportation	2,277,000

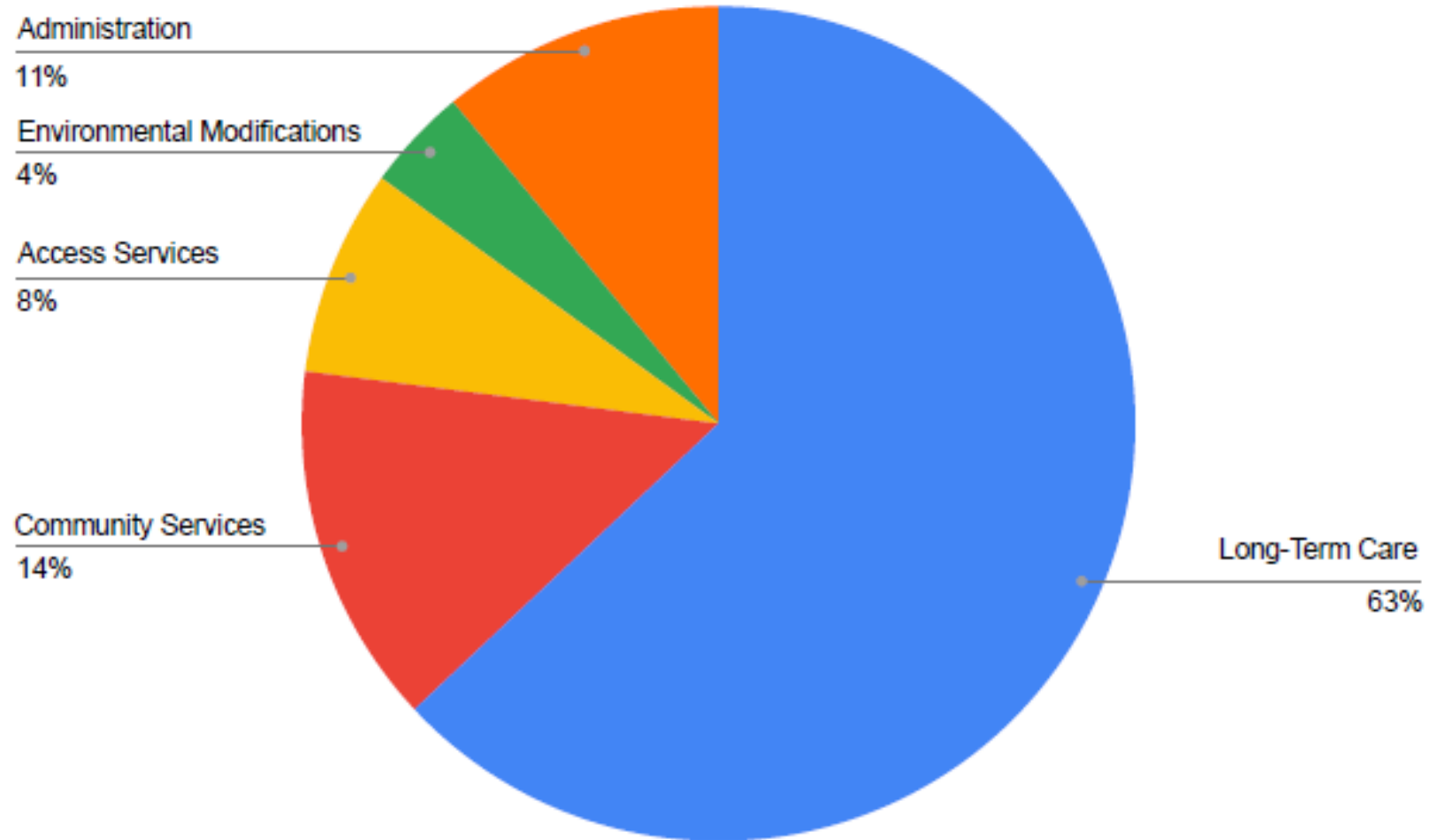
Subtotal      **\$7,022,000**

**Environmental Modifications: 4%**      \$3,549,000

**Administration: 11%**      \$10,402,000

Total      **\$94,020,000**

# Fiscal Year 2026 Projected Expenses



A photograph of a red brick building with arched windows and a flat roof. The building is the central focus, with its red brick facade and white-framed, multi-paned arched windows clearly visible. The roof is dark and flat, with several white, dome-shaped ventilation units. In the background, a city skyline with various high-rise buildings is visible under a clear blue sky. The text "Home@642" is overlaid in the center of the image.

# Home@642

# Project Description

- Many older Philadelphians face housing challenges due to a lack of safe, accessible, and affordable homes.

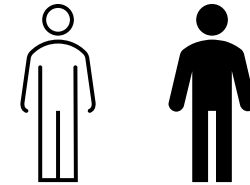


**1 in 3**

Renters age 60+  
in Philadelphia  
spend more than  
30% of their  
income on rent.



The 1-bedroom  
housing wage in  
zip code 19130 is  
**\$40.19**



**1 in 2**

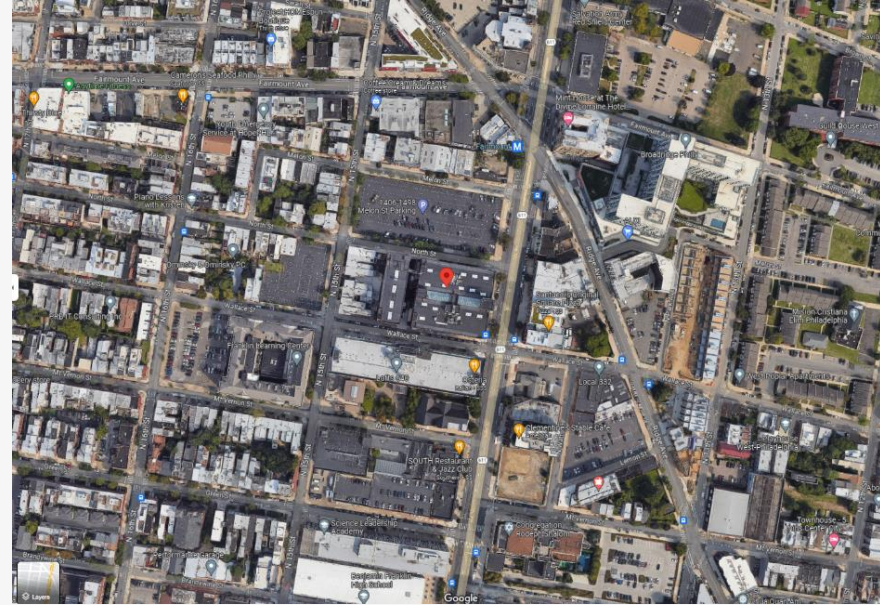
Homeowners age 60+  
in Philadelphia  
spend more than 30%  
of their income on  
housing costs.

# Proposal Information

- Renovating PCA's Annex building
  - Nationally and locally historic-certified
  - 79,000± square foot former factory, mostly vacant for 50 years
- Home@642 will offer:
  - Up to 70 high-quality, beautiful, accessible, historic homes for residents age 62+
  - A safe, professionally managed building
  - On-site supports and services to help older adults thrive
  - Senior community center serving Philadelphians age 60+
  - Landscaping, lighting, transit access, community gathering areas, and no added burden on local schools

---

# The Proposed Site



# About the Partner



- One of the nation's largest and most respected providers of senior housing and services, serving 10,000 residents in 100+ communities.
- Believes everyone should have the opportunity to live with enthusiasm, confidence, and security, regardless of physical, social, or economic circumstances.
- Developer of model affordable housing across Philadelphia, including Ann Thomas House, Riverside Presbyterian, On Lok House, and others.

# Anticipated Funding

- Low-Income Housing Tax Credits
- Historic Rehabilitation Tax Credits(federal and state)
- Pennsylvania Housing Affordability and Rehabilitation Enhancement Fund
- Community Development Block Grant/HOME
- Affordable Housing Program from the Federal Home Loan Bank
- Deferred and Reinvested Developer Fee
- Private Funds
- Rental Subsidies
- And more

---

# Community Testimony

- Reneé Cunningham, Center In Park
- Eric Ramos, Impact Total Fitness



# Q & A

Any questions?



# Thank you!



PHILADELPHIA CORPORATION FOR AGING

*Enriching lives, preserving dignity.™*

**PCA Helpline 215-765-9040**

**[www.pcaCares.org](http://www.pcaCares.org)**