

**HOUSING APPLICATIONS NOW AVAILABLE FOR
SALIGMAN NORTH
8900 ROOSEVELT BOULEVARD, PHILADELPHIA, PA 19115**

HUD Subsidized Apartments
Applicants must be 62+ years

Qualified residents pay 30% of adjusted income for rent.
Utilities included - Elevator building - Wheelchair accessible.

Applications may be requested at:
www.federationhousing.org/housing-application
or by mailing request to
Federation Housing Corporate Office
8900 Roosevelt Blvd, Philadelphia, PA 19115

MAIL AND ONLINE REQUESTS ONLY, PHONE CALLS NOT ACCEPTED



**Federation
Housing**



Caring Communities for Independent Seniors

**Samuel Tabas
Apartments**
2101 Strahle St.
Philadelphia, PA 19152
T 215.722.8688
F 215.725.9377

**Robert Saligman
Apartments**
8900 Roosevelt Blvd.
Philadelphia, PA 19115
T 215.464.3377
F 215.464.3044

**Ephraim Goldstein
Apartments**
12003 Bustleton Ave.
Philadelphia, PA 19116
T 215.969.0400
F 215.698.8263

**Miriam & Robert M.
Rieder House**
10102 Jamison Ave.
Philadelphia, PA 19116
T 215.464.4151
F 215.464.9793

**Evelyn & Daniel
Tabas House**
10102 Jamison Ave.
Philadelphia, PA 19116
T 215.464.4151
F 215.464.9793

Center Park III
10102 Jamison Ave.
Philadelphia, PA 19116
T 215.464.4151
F 215.464.9793

**Arthur & Estelle
Sidewater House**
780 Byberry Rd.
Philadelphia, PA 19116
T 215.856.9484
F 215.856.9550

Samuel A. Green House
1509 Ashbourne Rd.
Elkins Park, PA 19027
T 215.635.4100
F 215.635.7402

**Florence E.
Green House**
4701 Somerton Rd.
Trevose, PA 19053
T 215.364.1167
F 215.364.1187

Corporate Office
8900 Roosevelt Blvd.
Philadelphia, PA 19115
T 215.673.6446
F 215.673.9525
TTY: 711
FederationHousing.org



March 22, 2021

Philadelphia Corporation for the Aging (PCA)
642 N. Broad St.
Philadelphia, PA 19130

RE: Open Waiting List

To whom it may concern,

The waiting list for Saligman North is now open. Please see the attached Advertisement for information on how an applicant may request an application.

Sincerely,

Jocelyn Gil
Administrative Assistant



**WAITING LIST OPEN FOR
EPHRAIM GOLDSTEIN APARTMENTS – SHALOM & ARBOR
12003 BUSTLETON AVE, PHILADELPHIA, PA 19116**

HUD Subsidized Apartments
Applicants must be 62+ years old OR
Non-elderly physically disabled

Qualified residents pay 30% of adjusted income for rent.
Utilities included - Elevator building - Wheelchair accessible.

Applications may be requested at:
www.federationhousing.org/housing-application
or by mailing request to
Federation Housing Corporate Office
8900 Roosevelt Blvd, Philadelphia, PA 19115

MAIL AND ONLINE REQUESTS ONLY, PHONE CALLS NOT ACCEPTED



**Federation
Housing**



Caring Communities for Independent Seniors

Over

**Samuel Tabas
Apartments**
2101 Strahle St.
Philadelphia, PA 19152
T 215.722.8688
F 215.725.9377

**Robert Saligman
Apartments**
8900 Roosevelt Blvd.
Philadelphia, PA 19115
T 215.464.3377
F 215.464.3044

**Ephraim Goldstein
Apartments**
12003 Bustleton Ave.
Philadelphia, PA 19116
T 215.969.0400
F 215.698.8263

**Miriam & Robert M.
Rieder House**
10102 Jamison Ave.
Philadelphia, PA 19116
T 215.464.4151
F 215.464.9793

**Evelyn & Daniel
Tabas House**
10102 Jamison Ave.
Philadelphia, PA 19116
T 215.464.4151
F 215.464.9793

Center Park III
10102 Jamison Ave.
Philadelphia, PA 19116
T 215.464.4151
F 215.464.9793

**Arthur & Estelle
Sidewater House**
780 Byberry Rd.
Philadelphia, PA 19116
T 215.856.9484
F 215.856.9550

Samuel A. Green House
1509 Ashbourne Rd.
Elkins Park, PA 19027
T 215.635.4100
F 215.635.7402

**Florence E.
Green House**
4701 Somerton Rd.
Trevose, PA 19053
T 215.364.1167
F 215.364.1187

Corporate Office
8900 Roosevelt Blvd.
Philadelphia, PA 19115
T 215.673.6446
F 215.673.9525
TTY: 711

FederationHousing.org



March 8, 2021

Philadelphia Corporation for the Aging (PCA)
642 N. Broad St.
Philadelphia, PA 19130

RE: Open Waiting List

To whom it may concern,

The waiting list for Ephraim Goldstein Apartments – Shalom & Arbor is now open. Please see the attached Advertisement for information on how an applicant may request an application.

Sincerely,

Jocelyn Gil
Administrative Assistant



FRANCIS HOUSE
4460 Fairmount Avenue
Philadelphia, PA 19104

ELDERLY / DISABLE HOUSING

Affordable Housing is now accepting applications for
Efficiency bedroom.

Federally Subsidized Program
Application fee is free

Applications can be obtained
Monday thru Friday 9:00 am – 5:00 pm

PLEASE CALL: 267-838-3580



Handwritten signature or mark.



COMMUNITY CONTACT LETTER

Date: July 28, 2020

Philadelphia Corporation for Aging
642 N. Broad Street
Philadelphia, PA 19130

Subject: Affordable Housing Open for Applications

To Whom of May Concern,

We wish to inform you that Francis House (an affordable housing community) located at 4460 Fairmount Avenue, Philadelphia, PA 19104 is now accepting applications to be added to the waiting list.

Qualifications will be based on Federal Guidelines. Interested persons may obtain an application by calling 267-838-3580 or by writing or visiting:

Angela Court c/o Francis House
4400 Fairmount Avenue
Philadelphia, PA 19104

Application can be obtained between the hours of 9:00am and 5:00pm, Monday thru Friday. Completed application can be returned by regular mail or in person.

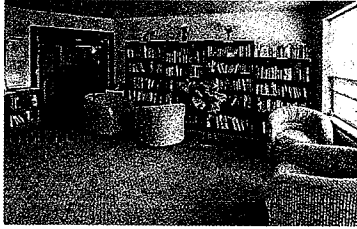
Sincerely,


Katherine Sanders
Property Manager





Maple Village



Philadelphia, PA

One & Two-Bedroom Apartment Homes

At Maple Village, you'll find a Philadelphia apartment home located in the heart of Germantown. Situated next to Germantown's Vernon Park, Maple Village provides seniors 62 and older a welcoming apartment home in a historic neighborhood.

COMMUNITY AMENITIES:

- Inviting community room, great for gathering with friends
- Resident lounges and lending library
- Convenient on-site parking
- Laundry facilities on each floor
- On-site professional management team and service oriented maintenance with 24-hour emergency call service
- Handicap accessible
- Controlled access entry
- Close to public transportation, shopping, downtown and Center in the Park Senior Center

RESIDENCE FEATURES:

- Modern kitchen with refrigerator and stove, perfect for making home cooked meals
- Wall-to-wall carpeting
- Ceramic tiled baths to help you relax and unwind
- Grab bar in shower/tub
- Central A/C
- Resident controlled heating & cooling

Contact Us:

22 West Rittenhouse Street | Philadelphia, PA 19144
T: 215.437.3462 | F: 215.438.6812 | TDD: 800.545.1833 x647
E: MapleVillage@Pennrose.com | MapleVillageSenior.com

Leasing Office Hours: Monday to Friday 8:30 a.m. - 5:00 p.m.

PROGRAMS AND ELIGIBILITY

Program requirements are specific to the property and individual unit. Eligibility for programs depends on several factors including: the number of people in the household, the total annual household income, credit and criminal background screening, and other criteria. Maple Village offers the following rent programs: Low-Income Housing Tax Credit

HOW TO APPLY

Complete the property Pre-application, available on the website or in person. Please contact the office if you would like a Pre-application emailed or mailed to you.

Return the completed, signed, and dated Pre-application to the property via mail, email, fax, or in person.

If there is an available unit that your household qualifies for, you will be contacted to schedule an application interview. Please plan to bring the following:

- Application Fee of \$25.00 per adult household member.
- Social Security Card(s) for each household member.
- Original Birth Certificate(s) for each household member.
- Addresses of your employer, bank, Social Security Office, and all other information pertaining to income.

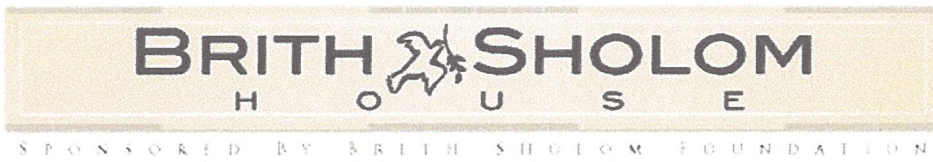
If there are no units currently available that your household qualifies for, you will be mailed a Confirmation of Pre-application via U.S. Mail and placed on the property's waiting list. You will be contacted when a unit that your household qualifies for becomes available.

Upon payment of the Application Fee, credit, criminal, and landlord screening will be processed.

INCOME LIMITATIONS & RENTS

(Effective 5/19 and subject to change)

Unit Size	Household Size	Qualifying Household Income Range	% AMI	Monthly Rent
1 Bedroom	1 person	\$17,370 - \$25,240	40%	\$579
	2 people	\$17,370 - \$28,840		
	1 person	\$22,240 - \$31,550	50%	\$748
	2 people	\$22,240 - \$36,050		
	1 person	\$26,850 - \$37,860	60%	\$895
	2 people	\$26,850 - \$43,260		
2 Bedroom	2 people	\$26,790 - \$36,050	50%	\$893
	3 people	\$26,790 - \$40,550		
	4 people	\$26,790 - \$45,050		



Brith Sholom House is a non-profit rental community for seniors (age requirement 62 and older). This Community is in a prime location near the hub of I-76 and City Avenue. There is convenient public transportation to Center City and many other destinations. We have private parking, affordable meal programs, excellent accomodations, comprehensive services, and amenities.



Rent for a "normal" unit ranges from \$899.00 per month, this does not apply to the 3rd floor or any larger apartment.

APARTMENTS

- Include all Utilites
- Studio and One Room Units Available
- Private Bath with Support Bars
- Private Kitchen
- Smoke Detectors
- Individually Controlled Heating and A/C

Brith Sholom House

3939 Conshohocken Ave.
Philadelphia, PA 19131
(215) 877-3445
Fax (215) 477-1330
TTY (800) 654-5984
www.brithsholom.com

AMENITIES

- | | | |
|-----------------------------------|---|--------------------|
| • Planned Social Services | & | Large Public Areas |
| • Auditorium | & | Laundry Room |
| • Library | & | Medical Office |
| • Café Open for Breakfast & Lunch | & | Dining Hall |



TAMARACK

1 bedroom 1 bath

610 sqft*



SILVER MAPLE

1 bedroom 2 bath

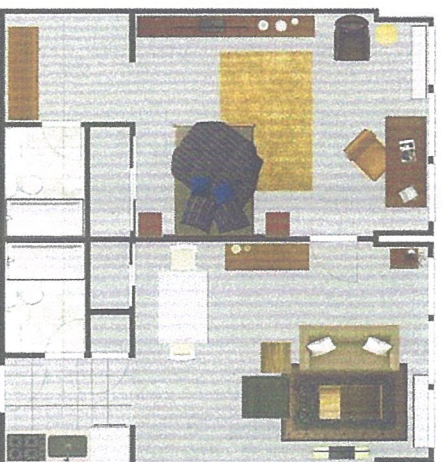
675 sqft*



EASTERN HEMLOCK

1 bedroom 2 bath

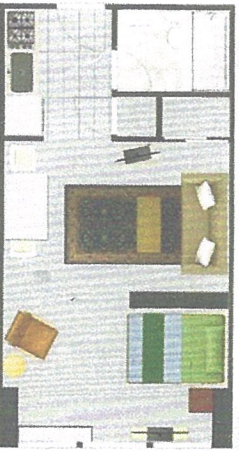
850 sqft*



BASSWOOD

Open plan loft

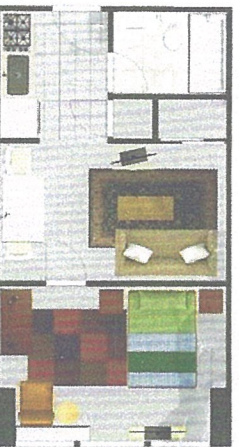
425 sqft*



SYCAMORE

1 bedroom 1 bath

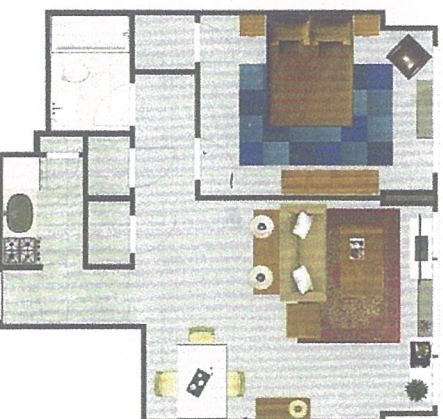
425 sqft*



MULBERRY

1 bedroom 1 bath

675 sqft*



HAWTHORN

1 bedroom 1 bath

610 sqft*



BRITH SHOLOM
H O U S E

* All square footage and measurements are approximate and floorplans, finishes, and furnishings are for illustrative purposes only.



Social events

- Self help support groups with bereavement, arthritis anxiety memory etc.
- Entertainment- including mummers country music , Donald Trump, Frank Sinatra , Elvis, Johnny Cash Ben Franklin impersonators.
- Exercise groups including dancing in our seats , chair yoga , kick boxing.
- Various vendors presentations
 - Book club
 - Knitting club
 - Happiness Group
 - Current events group

- History club
- Crocheting club
 - Torah study
 - Bible Study
- Shabbat Services
 - Weekly Christian services
- Celebrations of Jewish holidays
 - Pet therapy
- Student visits from various schools
 - Karaoke
 - Opera singer
 - Comedy night
 - Military band
- Honoring woman in the service
 - Honoring Vietnam veterans
 - Over 90's luncheon
- Skyping with Chinese students from Beijing
 - Game day

-
- Movie Day
- Odds and end day
- Photography day
- Veterans art fair
- Health fair
- Transportation fair
- Pedicure and manicures
- Mobile haircuts
- Many political events and politicians
 - Many singers
 - Computer teachers
 - Musical residents band
 - Israeli scouts
 - Diversity day
 - Black History projects
- Many ceremonies including Brith Sholom heroes
 - Poetry day

- Monthly Birthday celebrations
- And other suggestions by residents



Brownstones at Diamond Street

3200 West Diamond Street

Philadelphia, PA 19121

Philadelphia County

There are several units available at Brownstones at Diamond Street in Philadelphia County. Brownstones at Diamond Street is a LIHTC (Low Income Housing Tax Credit) property. The Housing Choice Voucher is accepted! The property offers spacious floor plans with high ceilings and oversized windows, full equipped, modern kitchen, dishwasher (select units), full size washer & dryer, and individually controlled heating & central air.

The 1, 2, and 3 bedroom units are at 60% AMI (Area Median Income).

Rent amount:

1 bedroom - \$895.00

2 bedroom - \$1,080.00

3 bedroom - \$1,264.00

Income limit per person:

one person household maximum \$37,860

two person household maximum \$43,260

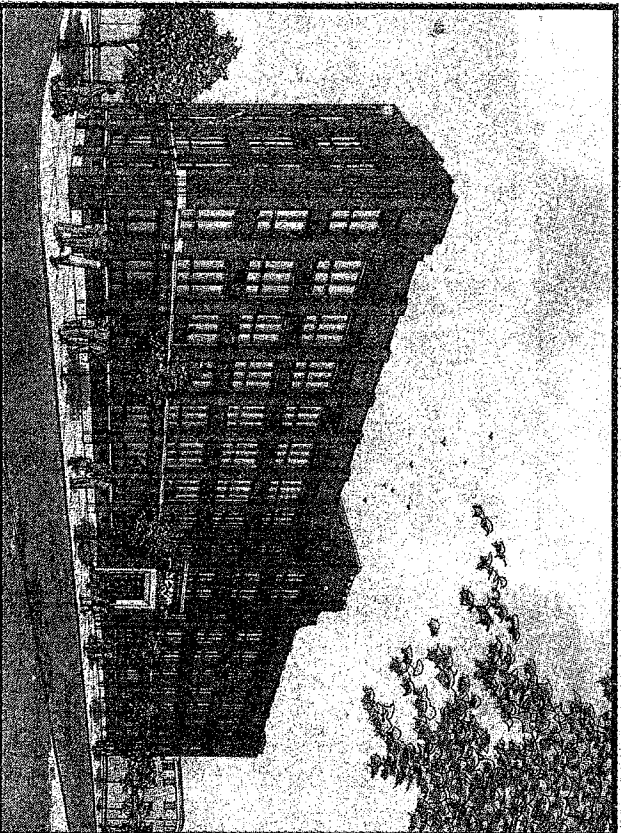
three person household maximum \$48,660

four person household maximum \$ 54,060

five person household maximum \$58,440

six person household maximum \$62,760

If you have any questions or would like an application, please contact Ashia Mathis, Property Manager. She may be reached at 215-236-8434 or diamonds@pennrose.com.



EDISON 64 VETERAN COMMUNITY

700 SOMERSET STREET, PHILADELPHIA

Community Amenities

- Computer Resource Center
- Community Canteen
- Supportive Services
- Laundry Facilities

Apartment Amenities

- Water, Electric Included
- Air Conditioning • Internet Essentials



INCOME

One Person
Two People

\$12,240.00
\$14,000.00

\$30,600.00
\$35,000.00

\$36,720.00
\$39,350.00

RENTAL RATES

Efficiency One Bedroom \$650

\$579-760

\$860

ACCEPTING APPLICATIONS MAY 1ST, 2019

FOR MORE INFORMATION VMCENTER.ORG OR CALL 215.532.4242

New Courtland Apartments at Henry Avenue

3232 Henry Avenue
Philadelphia, PA 19132
Philadelphia County
62+ Community

New Courtland Apartments at Henry Avenue is now accepting applications! This 62+ community offers access to supportive services, including the Innovage LIFE Program. New Courtland Apartments at Henry Avenue is located in Philadelphia County and offers its residents 24- hour security access and emergency call services during business hours.

All apartments feature central air, heat, and are equipped for phone, cable and internet service. All kitchen appliances and garbage disposal are included.

Please contact the property directly at 888-530-4913 or info@newcourtland.org, with any questions or to obtain an application.



**The Allegheny West Foundation
Community Store
2236 W. Hunting Park Ave
Philadelphia PA 19140
(215) 223-3714**

**Hours of Operation
Monday - Saturday 10:00 A.M - 5:00 P.M
Sunday - 12:00 Noon - 5:00 P.M.**

RENTAL HOUSING

**THE ALLEGHENY WEST FOUNDATION
OFFERS QUALITY RENTAL HOUSING
AND SEEKS GOOD TENANTS FOR THEIR
UNITS.**

1, 2 AND 3 BEDROOM APARTMENT UNITS

2 AND 3 BEDROOM HOUSES

***MUST BE INCOME ELIGIBLE AND HAVE
GOOD CREDIT TO QUALIFY.**

**** SECTION 8 CERTIFICATES ACCEPTED.**

IF INTERESTED, PLEASE CALL 223-3714

FOR AN APPLICATION.

NOW ACCEPTING APPLICATIONS!

AFFORDABLE SENIOR HOUSING

The Apartments at Henry Avenue offer safe, affordable housing specifically designed for adults 62 & older.

**THE APARTMENTS
AT HENRY AVENUE**
3232 Henry Avenue
Philadelphia, PA 19132

Call us: 1-888-530-4913
Email us: info@NewCourtland.org



The NewCourtland Network provides equal access to housing and services without regard to race, color, religion, creed, gender, familial status, physical handicap or national origin.

- AMENITIES INCLUDE:**
- Access to supportive services, including the InnoVage LIFE Program on the ground floor.
 - 24-hour security access and emergency call services during business hours
 - Apartments feature central air, heat, and are equipped for phone, cable, and internet service. All kitchen appliances and garbage disposal are included.
 - Ample onsite parking
 - Senior-friendly community with easy access to shopping and transportation
 - Wheelchair accessible



NEWCOURTLAND
Apartments at Henry Avenue

PARK TOWER APARTMENTS
4001 Conshohocken Avenue
Philadelphia, PA 19131
215-878-8882

One-bedroom units available. This property serves populations that are 62 and older, or disabled. Call for income guidelines and application instructions. Hours: Monday through Friday 8:30 AM to 5:00 PM.

01/08/19

Witherspoon Senior Apartments

2050 S. 58th St.
Philadelphia, PA 19141
Philadelphia County
62+ Community

There is an accessible, one bedroom unit available at Witherspoon Senior Apartments in Philadelphia County. Witherspoon Senior Apartments is a 62+ community. The available unit is at 20% area median income. The income limit is \$12,240 for one person and \$14,000 for two people.

The utilities are included in the rent. The rent is \$328 per month. Witherspoon Senior Apartments is new construction with a laundry facility on the premises. There is also a community room, off street parking, activities room, computer lab and part time service coordinator!

If you have any questions or would like an application, please contact Keith Caldwell, Property Manager. He may be reached at keith.caldwell@presbysinspiredlife.org.

12/24/18

Queen Lane, LP
322 W. Penn Street, A
Philadelphia, PA 19144
Philadelphia County
General Occupancy

There is a 2 bedroom, accessible unit available at Queen Lane, LP. Queen Lane, LP is in Philadelphia County. The unit is a 20% tier unit.

If you have any questions or would like an application, please contact Raymonda Mormon, Property Manager. She may be reached at 215-684-1021 or raymonda.Mormon@pha.phila.gov.

11/08/18

FALLS RIDGE APARTMENTS
4349 RIDGE AVENUE
PHILA PA 19129

Subsidized income-based wait list.
Call for income guideline and application instructions.
215-848-4116.

06/25/19

Lehigh Park Apartments

2622 N. Lawrence St.
Philadelphia, PA 19133
Philadelphia County
General Occupancy

A three bedroom accessible unit is available at Lehigh Park Apartments. Lehigh Park Apartments is in Philadelphia County. The rent is subsidized and based on income.

Please contact Tony Beltram, Property Manager with any questions or to receive an application. He may be reached at 215-291-9212 or fbeltram@hacemgmtco.org. Thank you.

Hardy Williams Veterans Center

7100 Grover's Avenue
Philadelphia, PA 19153
Philadelphia County
55+ Community

There are several vacant units at Hardy Williams Veterans Center. Hardy Williams Veterans Center is in Philadelphia County. The one bedroom, one bath units rent for \$820-\$984 per month. The income limit per person is \$36,720.

If you have any questions, please contact Ashley Handy, Property Manager. She may be reached at 215-863-8017 or ahandy@helpusa.org.

Freedom Village
1627 Ogden Street
Philadelphia, PA 19130
General Occupancy

There is a 2 bedroom, hearing and visual unit available at Freedom Village. Freedom Village is located in Philadelphia County. If you know of anyone that needs the features of a h/v unit, please contact Robin Taylor, Senior Property Manager. She may be reached at (215) 557-8484 x3229 or rtaylor@columbuspm.org. Thank you.

Lucien E. Blackwell Homes
755 N. Markoe St.
Philadelphia, PA 19139
Philadelphia County
General Occupancy

There is a 3 bedroom, accessible unit available at Lucien E. Blackwell Homes. Lucien E. Blackwell Homes is located in Philadelphia County. Please view the link below to see features of the property.

http://www.pha.phila.gov/media/16866/pha_fact_leb.pdf

If you have an eligible applicant, please contact Raymonda Mormon, Property Manager. She may be reached at Raymonda.Mormon@pha.phila.gov or 215-684-2715. Thank you.

09/06/18

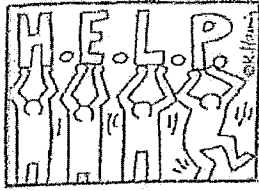
Clara Baldwin Manor
2600 W. Susquehanna Ave.
Philadelphia, PA 19121
Philadelphia County
62+ Community

There are one bedroom, accessible units available at Clara Baldwin Manor in Philadelphia County. Clara Baldwin Manor is a 62+ community. The rent is 30% of income.

If you have any questions or would like an application, please contact Marjorie L. Jett-El, Property Manager. She may be reached at 215- 978-4757 or clarabaldwin@comcast.net.

09/20/18

HELP USA



Building Better Lives

The Hardy Williams Veterans Center At Help Philadelphia

Applications Available!!!

- 60 affordable one-bedroom apartments for individuals aged 55 and up, veterans preferences.
- New energy-efficient building located safe, quiet residential neighborhood with easy access to public transportation, grocery, pharmacy and post offices.
- Facilities include upper-floor deck, community room, lounge areas and parking.
- Income restrictions apply.

DOCUMENTS TO BE SUBMITTED ALONG WITH APPLICATION

- Copies of Birth Certificate
- Copies of Social Security Cards
- Copy of DD214
- Copy of Photo ID
- Proof of Income (most recent)
- Copies of all Asset information

FOR MORE INFORMATION, PLEASE CALL
215-863-8017

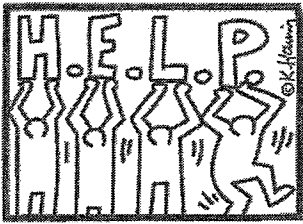
OLGA QUINTANA
ASSISTANT PROPERTY MANAGER

7100 GROVERS AVE
PHILADELPHIA, PA 19153

PHONE 215-863-8017
FAX: 215-365-0594
EMAIL: quintana@helpusa.org

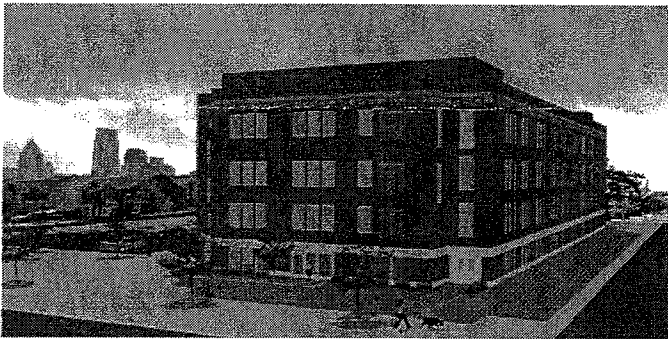


EQUAL HOUSING OPPORTUNITY



HELP USA
Building Better Lives

Philadelphia V – HELP USA

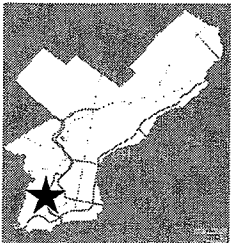


HELP PHILADELPHIA V

843-847 NORTH 12TH STREET , PHILADELPHIA, PA 19123

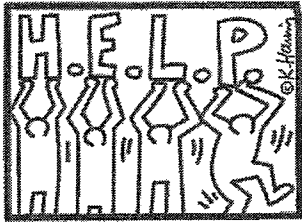
- 37 subsidized one and two bedroom apartments for Veterans aged 55+ New energy-efficient building located in a quiet residential neighborhood with easy access to public transportation, grocery, pharmacy and post office
- On-site supportive services and access to health care - provided by Public Health Management Corporation (PHMC)
- Facilities includes community room, laundry facility and off-street parking
- Developed and managed by HELP USA, managers of HELP Philadelphia IV Homes / Hardy Williams Center (7100 Grovers Avenue)
- *Income restrictions apply (income / assets assessed at application to determine eligibility)*

To apply, please visit HELP Philadelphia at 4910 Wyalusing Ave and inquire at the front desk. Applications will not be accepted by email or fax.



HELP USA

HELP USA operates more than 40 programs and residences across the country – serving 10,000 people per year. HELP currently manages seven veterans residences across the country and two veteran-specific homelessness prevention programs.

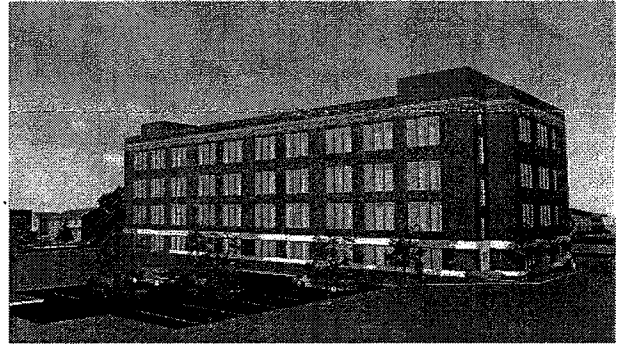
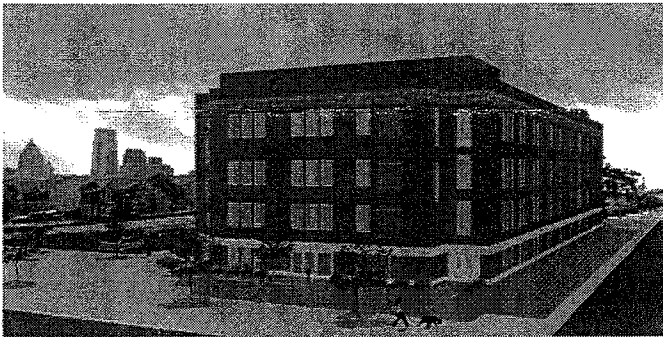


HELP USA

Building Better Lives

Philadelphia V - Veterans Center

at HELP USA



PHILADELPHIA V - VETERANS CENTER AT HELP USA

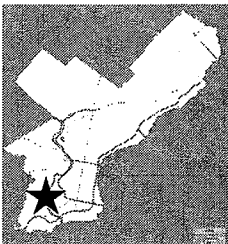
843-847 NORTH 12TH STREET , PHILADELPHIA, PA 19123

HOUSEHOLD INCOME LIMITS (AT LEASE-UP):

May be subject to change

2018 PHFA INCOME LIMITS:

Location	% of AMI	Median Income	# in Household / Annual Income Limit		
			1	2	3
PHILADELPHIA	20%	\$ 87,400	\$ 12,240	\$ 14,000	\$ 15,740
	50%	\$	\$ 30,600	\$ 35,000	\$ 39,350
	60%	\$	\$ 36,720	\$ 42,000	\$ 47,220



HELP USA

HELP USA operates more than 40 programs and residences across the country – serving 10,000 people per year. HELP currently manages seven veterans residences across the country and two veteran-specific homelessness prevention programs.

NOW ACCEPTING APPLICATIONS

HAVEN PENIEL SENIOR RESIDENCE

Located at 1615 N. 23rd Street in the newly developed Sharswood Area.

**Enjoy an amenities package
tailored to today's lifestyle.**

AMENITIES INCLUDE:

- Heat & Hot Water Incl.
- Air Conditioning
- On Site Laundry Rooms
- Community Room
- Fitness Center
- Off Street Parking
- 24 Hour surveillance system
- Controlled Building Access
- On Site Professional Management Team

*Cozy, convenient, comfortable,
and secure living, are hallmarks of
residential life at Haven Peniel
Senior Residences. This apartment
building offers affordable
independent living to low income,
mature adults 62 years of age or
older.*

Applications are now being accepted for
residency at:

Haven Peniel Senior Residence
1615 N. 23rd Street
Philadelphia, PA 19121
(215) 787-0400
(215) 787-0333 FAX

Office Hours

Mon., Tues, Wed., & Friday
9:00 – 5:00
Thursday – closed

HAVEN PENIEL SENIOR RESIDENCE

LOCATED AT

1615 N 23RD STREET

PHILADELPHIA, PA 19121

NOW ACCEPTING APPLICATIONS FOR 62 YRS. OF AGE OR OLDER

- **INCOME BASE APARTMENTS**
- **ONE BEDROOM APARTMENTS AVAILABLE, HEAT AND HOT WATER INCLUDED**
- **ACCESSIBLE TO PUBLIC TRANSPORTATION**
- **CLOSE TO ROUTES 3, 33, 61**
- **ADA ACCESSIBLE**
- **CLOSE TO PROGRESS PLAZA WHICH HOST FRESH GROCER'S SUPERMARKET**
- **CITIZENS AND UNITED BANK, AND HOST OF OTHER VENUES**

FOR MORE INFORMATION CONTACT

ELAINE TITUS

215-787-0400 OFFICE

215-787-0333 FAX

etitus@cpmmanagement.com

Greater Grays Ferry Estates
3001 Moore Street
Philadelphia, PA 19145
Philadelphia County
55+

There are several one bedroom units available at Greater Grays Ferry Estates in Philadelphia County. Greater Grays Ferry Estates is a 55+ community. There is also an accessible, one bedroom unit available.

Residents do not have to pay for utilities. Greater Grays Ferry Estates does not accept vouchers. Rent is based on income. There is no application fee. Security Deposit is \$99.00.

All the 1 bedroom units feature:

*** A/C-Heating Unit *Wall to Wall Carpeting *After hour security *Elevators *Parking lot in front of building *Dishwasher *Garbage Disposal *Gas Stove *Refrigerator *Washer/Dryer in Unit *Grab bars in bathroom *Tub seat**

If you have any questions or would like an application, please contact **Elizabeth D. Reevey**, Acting Senior Property Manager. She may be reached at 215-684-7076 or Elizabeth.Reevey@pha.phila.gov. Thank you.

5/9/18



IVY RESIDENCE, I & II

4051 Ford Road, Philadelphia, PA 19131

127 One-Bedroom Apartments

Older Adults (62+)*

Income restrictions apply

NOW ACCEPTING NEW APPLICATIONS

TO PICK UP AN APPLICATION, VISIT OUR ADDRESS ABOVE OR
CALL NUMBER BELOW TO HAVE ONE MAILED TO YOU

CALL TODAY! 215-871-3303



EQUAL HOUSING
OPPORTUNITY



Lucien E. Blackwell Homes

755 N Markoe Street
Philadelphia, PA 19139
Philadelphia County
General Occupancy

There are two vacant accessible units available now at Lucien E. Blackwell Homes in West Philadelphia. Please see the specific details of the units below:

3 bedroom units

Income Limit: Up to \$14980 if 3 people are in the household, up to \$16640 if 4 people are in the household, up to \$17980 if 5 people are in the household, and up to \$19320 if 6 people are in the household.
Must need accessible features verified by doctor.

Please contact Deanna Boone, Compliance Specialist for the Philadelphia Housing Authority with any questions. She may be reached at 215-684-2715 or Deanna.Boone@pha.phila.gov.

Thank you!

02/06/18

FYI

Subject: apartments available at Maple Village in Germantown

Maple Village is a Senior Tax Credit apartment complex, which has an age requirement of 62 years of age or older.

Applicants need a minimum annual income of \$23,320.00, but no more than \$34,980.00 for a single person. Depending upon their income, we would offer them a one-bedroom unit that either cost \$683 (medium) or \$820 (large) per month; or a two bedroom at \$816.00. Residents pay their own utilities, both electric and gas (hot water tank).

Our waiting list averages from approximately two months to one year for the medium and large units.

Maple Village is located in the historic Germantown section of the city. We are right across the parking lot from Center in the Park, a senior center which provides a full array of services and activities for seniors 55 years and older.

We offer modern apartments with swipe-key entry systems, frost-free refrigerators, electric ranges, carpeted living areas, ceramic tiled bath with grab bars around the toilets and bath tubs; mini-blinds, cable ready, two elevators, two washers and two dryers on each floor. Our Community room and theme rooms on each floor offer a variety of opportunities for socializing.

Please feel free to give me a call at 215-438-6810 if you need any additional information or an application. We will be happy to mail one out to you.

Kimbrell Francis
Property Manager



Beautiful Apartment Studio Homes Now Available !

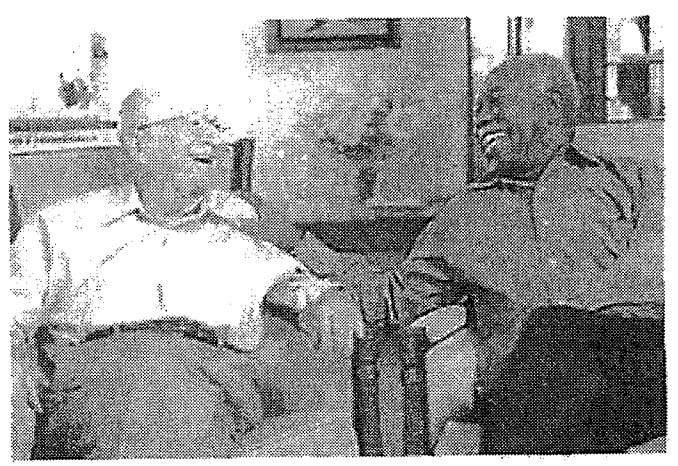
At Kearsley Estates we provide supportive/independent living for seniors ages 62 and older. We are conveniently located in the Wynfield section of Philadelphia . Our apartments are nestled and tucked away, in a tranquil setting with views of nature .

Kearsley Estates Senior Living

Quality Senior Living

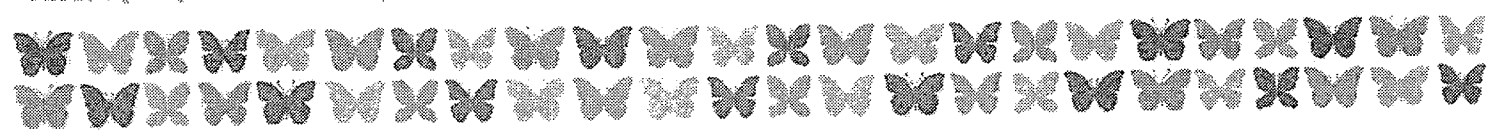
Our Apartment Home Features

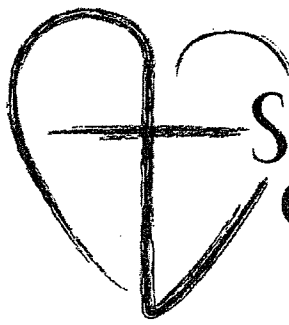
- Modern Stainless-Steel Appliances
- Option to Personalize Your Apartment Home
- Kitchenet with Microwave Oven and Refrigerator/Deluxe Kitchenette Avail.
- Cherrywood Flooring
- Tiled Entryway
- Wandless Blinds
- County Medicine Cabinets
- Onsite Laundry facilities
- Onsite Management
- Maintenance
- Utilities Included
- All Inclusive Activities
- Chapel
- Meal Plan Option
- 12 Hour Security
- Move-In Special



Kearsley Estates

2100 N 49th Street
Philadelphia, PA 19131
Phone : (215)863-8422 fax: (732)719-3495





ARCHDIOCESE OF PHILADELPHIA

ST. JOHN NEUMANN PLACE II CATHOLIC HEALTH CARE SERVICES



2627 Mifflin Street
Philadelphia, PA 19145

For more information call **610-260-1152**

CARING FOR SENIORS EVERY STEP OF THE WAY



RBC Capital Markets



CARING FOR SENIORS

Our Mission:

The Mission of Catholic Health Care Services is rooted in the Mission of the Roman Catholic Church in the Archdiocese of Philadelphia. Catholic Health Care Services is committed to excellence in the provision of care because we believe that all people, created in the image and likeness of God, possess an innate dignity and destiny. We believe that human life must be respected at every stage, from the moment of conception to the moment of natural death. We respond to the example of Jesus Christ in the Gospels by serving seniors through the provision of physical, psychosocial and spiritual care. We are committed to the Church's preferential option to serve the poor, and so we strive to serve those in need with compassion and through responsible stewardship.



About St. John Neumann Place II

St. John Neumann Place II (SJNP II) is our most recent development that builds on the success of St. John Neumann Place (SJNP) in South Philadelphia. The addition of this new building will create a campus of senior living in South Philadelphia.

St. John Neumann Place II will feature 52 one bedroom apartments for seniors 62 years of age or older and income qualified. The building will have an adjoining Wellness Center that will welcome seniors who live in both buildings as well as community members who are age and income qualified. Funding for this development is primarily through Low Income Housing Tax Credits (LIHTC) equity from RBC and Capital One, Federal Home Loan Banks of New York and Pittsburgh and Rental Assistance Demonstration funding from PHA.

EVERY STEP OF THE WAY

St. John Neumann Place II offers an array of amenities to enhance quality of life for independent seniors such as:

- 52 one-bedroom apartments with kitchen, living area, bedroom, closet space and bathroom
- Two elevators in the building
- Laundry rooms and trash/recycling rooms on each floor
- Resident community room and lounge
- Accessible units available
- Easy access to public transportation
- Close to shopping, restaurants, medical offices, places of worship, entertainment and cultural venues
- Energy efficient features and appliances
- Access to the attached Wellness Center
- Outdoor garden space to enjoy the changing seasons
- On-site property manager to ensure building is properly maintained, clean and safe
- On-site supportive services coordinator to help residents access senior services and activities to enhance independence

Income qualifications

	1-person household	2-person household
Maximum gross <u>annual</u> income	\$33,780	\$38,580

- Utilities are not included in rent

APPLICATION QUALIFICATIONS

Applicants must

- Be 62 years of age or older
- Meet income qualifications
- U.S. Citizen or Legal Resident
- Undergo criminal history check at time of application
- Undergo credit check at time of application
- Demonstrate history of satisfactory housekeeping habits
- Provide acceptable landlord references

APPLICATION DOCUMENTATION

When applying, please bring:

- Driver's License or State ID
- Birth Certificate
- Social Security Card
- Proof of Income (SS, SSI, Pension, Employment, Public Assistance, VA Benefits, etc.)
- Bank Statements



Catholic Health Care Services
ARCHDIOCESE OF PHILADELPHIA

FINDING AFFORDABLE HOUSING

The Pennsylvania Housing Finance Agency's "*Pennsylvania Affordable Apartment Locator*," is a free service for information about apartment locations, rental costs, features and vacancies.

www.PAHousingSearch.com

(877) 428-8844

24/7 access online and bilingual support from call center available Mon - Fri, 9 a.m. - 8 p.m.

Lancaster Housing Opportunity Partnership,

(717) 291-9945

www.lhop.org provides information online on landlord-tenant rights, first-time home ownership, and renter education.

Numerous agencies manage rental properties that are considered affordable for individuals with limited means. Age, disability and income may be eligibility factors. The amount of rent for some units are adjusted based on the actual income of the applicant; others are based on what is considered "affordable rent" in this region.

Community Action Housing Development Program

(717) 299-7301

Community Basics, Inc.

(717) 735-9590

www.communitybasic.com

Housing Development Corporation

(717) 291-1911

www.hdcweb.com

Housing & Urban Development

(800) 440-8647

www.hud.gov

Both the **City** and **County Housing Authorities** have federally funded rental assistance programs where applicants may apply to receive ***vouchers*** to cover a portion of the rent. Contact the agencies listed below for additional information and to determine if voucher applications are currently being accepted.

Lancaster City Housing Authority www.lcha.ws

(717) 397-2835 ext. #3021

Lancaster County Housing Authority www.lchra.com

(717) 394-0793

revised 7/17

Redeemer Village

Welcome to Redeemer Village.

Holy Redeemer Village is a low-income, HUD-subsidized independent living community for people age 62+ who meet HUD income requirements.

Located directly across Huntingdon Pike from Holy Redeemer Hospital, Holy Redeemer Village comprises 199 apartments for singles or couples, and provides a home in which the well elderly may live in safety and security, enjoying companionship and independence in a happy and active atmosphere.

Services include:

- Bus service for shopping and religious services
- 24-hour on-call emergency services
- Beauty parlor
- Game room
- Arts and crafts room
- Community room
- General store
- Gift shop
- Library
- Organized resident council

Because Holy Redeemer Village is HUD-subsidized, there is usually a waiting list for applicants. The waiting list is periodically reopened as specified by federal regulations.

Holy Redeemer Village waiting list is currently open for HUD subsidized apartments until April 27, 2018. You may download an online application or call 1-800-818-4747.

Below are the application forms and instructions on how to submit.

- [Redeemer Village Application](#)
- [HUD – 92006 – Supplement to Application](#)
- [Declaration of Citizenship](#)
- [Verification Consent Form](#)
- [Application Return Instructions](#)

Please send your completed forms to Holy Redeemer Information & Referral Center, 521 Moredon Road, Huntingdon Valley, PA 19006. We must receive your application no later than 5:00PM on Thursday, May 31, 2018.

Upcoming Classes and Events

FEB Mini Childbirth Class
15

FEB Family & Friends CPR
20 Course

FEB Recipe Exchange and
22 Cooking Exploration

Patient Services

Schedule a Test

Contact Us

Related Blogs



Think Safety Before You Go Home

Related Pages

[LifeCare](#)

[St. Joseph Manor](#)



We're Moving



MARCH 5TH

our offices, located at

12 S. 23RD STREET  1800 S. 32ND STREET

QUESTIONS:

215.684.4112

info@pha.phila.gov

HELP Philadelphia III

6100 Eastwick Avenue
Philadelphia PA 19142
(Philadelphia County)
General occupancy

There is a 2 bedroom accessible, 1st floor unit available that is subsidized through Philadelphia Housing Authority. The tenant would pay no more than 30% of their income. HELP Philadelphia III is located in Philadelphia County. The income guideline for 1 person is \$28,150. The income limit for 2 people is \$32,150. The income limit for 3 people is \$36,150. Please contact Candra Johnson, Assistant Property Manager for an application. She may be reached at (215) 921-8354 ext. 201 or caljohnson@helpusa.org.

Nellie Reynolds Garden

2653 W Glenwood Ave
Philadelphia, PA 19121
Philadelphia County
55+ Community or physically disabled

There are accessible units available at Nellie Reynolds Garden in Philadelphia County. Nellie Reynolds Garden is a 55+ community. The two bedroom units have limited accessible features. Please contact the property manager for information on the specific features of each unit. The unit information and income guidelines are listed below.

2 bedroom, 1 bath adaptable unit, 30% income tier (\$13,041-\$19,560 annually)

2 bedroom, 1 bath adaptable unit, 40% income tier (\$19,561-\$26,080 annually)

If you have any questions or would like an application, please contact Lauren M. Thomas, Property Manager at 215-684-8128 or 215-684-3069 or lauren.thomas@pha.phila.gov.

Suffolk Manor

1416 Clearview Street
Philadelphia, PA 19141
Philadelphia County

There are accessible units available at Suffolk Manor in Philadelphia County. Please view the unit details below.

- 2 bedroom

- Senior unit
- No roll in shower
- Wheelchair accessible unit
- Income not to exceed \$28,500 (if one person, in the case the extra bedroom is for equipment or live in aide) or \$32,600 (if 2 people).

- 1 bedroom

- Senior Unit
- Income not to exceed \$28,500 or \$32,600 (if 2 people).
- Wheel chair accessible unit

- No roll in shower

If you have an interested candidate, please contact **Deanna Boone**, Compliance Specialist at (215) 684-5906 or Deanna.Boone@pha.phila.gov.

Marshall Shepard Village

755 N. Markoe Street
Philadelphia, PA 19139
Philadelphia County
General Occupancy

There is a two bedroom unit, for individuals who are deaf or hard of hearing available at Marshall Shepard Village. The unit is located in West Philadelphia. Please see the unit specific details below:

Income Limit: \$20,000-\$26,640 (2 person household)
Income Limit: \$22,500-\$29,960 (3 person household)
Income Limit: \$24,950-\$33,280 (4 person household)

If you know of anyone needing a unit with Hearing Impaired features please contact Deanna Boone, Compliance Specialist. She may be reached at (215) 684-5906 or deanna.boone@pha.phila.gov.

Mt Olivet Village
642 N 41st Street
Philadelphia, PA 19104
Philadelphia County
55+

There are two wheelchair accessible, one bedroom units available at Mt. Olivet Village in Philadelphia County. Mt. Olivet Village is a 55+ community.

The application is attached. Please send the completed application to **Deanna Boone, Compliance Specialist**. She may be reached at (267) 236-5571 if you have any questions or deanna.boone@pha.phila.gov. Thank you.

Please see description of units below:

- 1 bedroom
- Senior unit
- No roll in shower
- Wheelchair accessible unit
- Income not to exceed \$11,600 (if one person, in the case the extra bedroom is for equipment or live in aide) or \$13,300 (if 2 people).
- 1 bedroom
- Senior Unit
- Income not to exceed \$29,150 or \$33,300 (if 2 people).
- Wheelchair accessible unit
- No roll in shower

Kings Highway
2004 E. Stella Street
Philadelphia, PA 19134
Philadelphia County

There is a two bedroom-1 bathroom ADA wheelchair accessible unit available at Kings Highway. The income restriction is at 50%.

Please direct all questions to Doris Scipio, Property Manager. She may be reached at (215) 557-8484 Ext 3319 or dsclipio@columbuspm.org.